

BILL OF MATERIAL

ADVANCE	SEQ.	SEQ.	MARK	QUAN.	SHAPE	LENGTH	REMARKS	WT.	WEIGHT	
MILL #	NO.	QUAN.	TOTAL					UNIT	TOTAL	
1-17	105	1	105-48B	ONE	BEAM			12511	12511	
			105-48B	1	W33x130	71	4 1/8	A572-50	9275	9275
			f105	15	FL 3/4x12	1	2	A572-50	36	536
			w134	1	W10x33	0	10 1/8	A572-50	28	28
			p175	1	PL 1x11 1/2	1	10	A572-50	72	72
			p1	1	PL 1/2x11 1/2	2	0 15/16	A572-50	41	41
			p194	1	PL 1/2x12	1	0	A572-50	20	20
			p203	1	PL 1/2x12	1	4	A572-50	27	27
			f193	1	FL 1/2x10	0	10	A572-50	14	14
			f222	2	FL 1/2x6	3	0	A572-50	31	61
			p225	2	PL 5/8x5 3/8	0	11	A572-50	10	21
			w135	1	W10x33	0	5 3/16	A572-50	14	14
			w196	1	W8x35	3	8 1/2	A572-50	130	130
			p204	2	PL 1/2x3 3/4	0	7	A572-50	4	7
			w1277	1	W14x109	7	1 5/16	A572-50	775	775
			p295	2	PL 5/8x3 5/8	1	6	A572-50	12	23
			f117	2	FL 3/8x8	4	8 1/2	A572-50	48	96
			p298	1	PL 3/8x11 3/8	0	11 1/2	A572-50	14	14
			p314	1	PL 3/8x6 7/8	0	11 3/8	A572-50	8	8
			w800	13	W10x33	0	8 1/8	A572-50	22	290
			w690	1	W12x45	6	4 15/16	A572-50	289	289
			w384	1	W10x39	9	8	A572-50	377	377
			ss106	14	HS 1/2	0	6	A36		
			p481	1	PL 3/4x11 15/16	1	7	A572-50	48	48
			p287	4	PL 1/2x5 1/2	1	0	A572-50	9	37
			p486	4	PL 7/8x5 1/2	3	0 3/16	A572-50	49	198
			a120	2	L4x3x3/8	1	11 1/2	A572-50	17	33
			p468	1	PL 3/8x7 13/16	1	4 1/8	A572-50	13	13
			f238	1	FL 1/4x 1/2	1	1	A572-50		
			p522	1	PL 3/8x7 9/16	1	3 15/16	A572-50	13	13
			p539	1	PL 1x11 15/16	1	3	A572-50	51	51
			sb2	1	SLIDE BRG	0	10	A36		
					FIELD BOLTS					
				16	TC 7/8 Dia A325N	0	3 1/2	IHD WASH		

Total weight :12511

SHOP NOTES

- ALL RUNNING DIMENSIONS ARE TAKEN FROM THE LINE.
 - ALL GAS RE-ENTRANT CUTS WILL HAVE A RADIUS OF 1/2" UNLESS NOTED
 - ALL SHOP BOLTS SHALL BE SNUG TIGHT UNLESS NOTED
- MATERIAL: ASTM A572-50 UNLESS NOTED
 WELD: E70XX-LH ELECTRODES
 OPEN HOLES: 15/16 UNLESS NOTED
 PAINT: PREP:
 PRIME:
 FINISH:
 BOLTS: A325, BLACK, HEX HEAD TENSION CONTROL (U.N.O.)

DWG. DESCRIPTION: RAKER	REF. ERECTION DWG:
-------------------------	--------------------

SHOP NOTE:

WORK SHT. NO. 105-48A WITH
SHT. NO. 105-48B, 105-48C & 105-48D

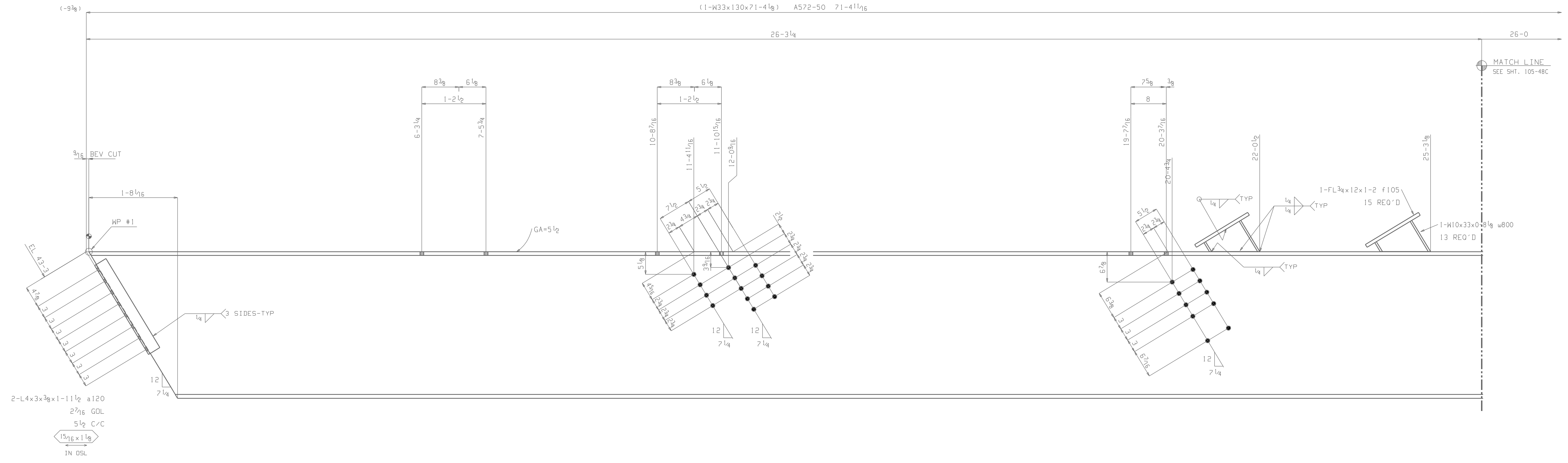
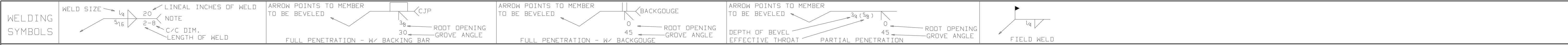
**NO PAINT
THIS DRAWING**

DRAWINGS ARE SUBMITTED FOR APPROVAL IN ACCORDANCE WITH
AISC MANUAL NINTH EDITION - PAGE 5-229 PARAGRAPH 4.2
AND PAGE 5-250 SECTION 4.

REVISION & DISTRIBUTION BOX					
REV.	DATE	DESCRIPTION	BY	TO APP'L	TO SHOP
△					
△					
△					

CUSTOMER:		JOB TITLE:		DRAWN BY:		DATE:		CHK'D BY:		DATE:	
				JOB. NO. 105-48A							
				JOB. NO.							

Jun. 12. 2002 07:37:45 AM



2-L4x3x3/8x1-11 1/2 a120
 2 7/16 GOL
 5 1/2 C/C
 15/16 x 1 1/8
 IN OSL

SHOP NOTE:
 WORK SHT. NO. 105-48B WITH
 SHT. NO. 105-48A, 105-48C & 105-48D

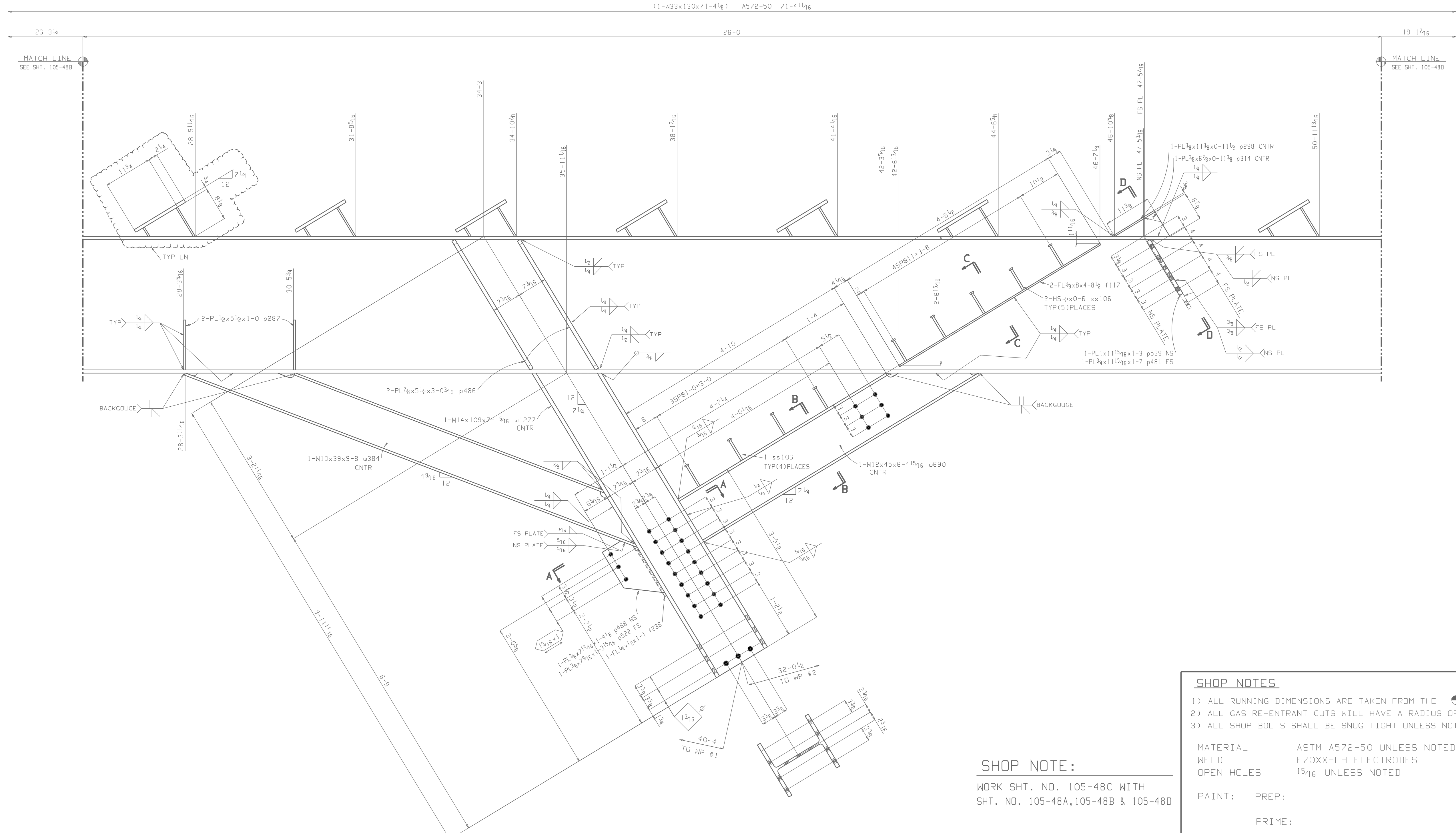
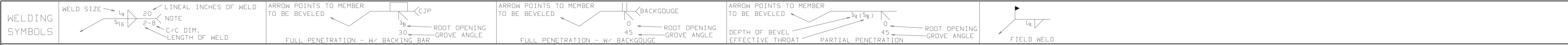
**NO PAINT
 THIS DRAWING**

SHOP NOTES	
1) ALL RUNNING DIMENSIONS ARE TAKEN FROM THE LINE.	
2) ALL GAS RE-ENTRANT CUTS WILL HAVE A RADIUS OF 1/2" UNLESS NOTED	
3) ALL SHOP BOLTS SHALL BE SNUG TIGHT UNLESS NOTED	
MATERIAL	ASTM A572-50 UNLESS NOTED
WELD	E70XX-LH ELECTRODES
OPEN HOLES	1 5/16 UNLESS NOTED
PAINT: PREP:	
PRIME:	
FINISH:	
BOLTS:	A325, BLACK, HEX HEAD TENSION CONTROL (U.N.O.)
DWG. DESCRIPTION: RAKER	REF. ERECTION DWG:

DRAWINGS ARE SUBMITTED FOR APPROVAL IN ACCORDANCE WITH
 AISC MANUAL NINTH EDITION - PAGE 5-229 PARAGRAPH 4.2
 AND PAGE 5-250 SECTION 4.

REVISION & DISTRIBUTION BOX						
REV.	DATE	DESCRIPTION	BY	TO APP'L	TO SHOP	TO FIELD
△						
△						
△						

CUSTOMER:				DWG. NO.
JOB TITLE:				105-48B
LOCATION:				JOB. NO.
DRAWN BY:	DATE:	CHK'D BY:	DATE:	



ONE BEAM 105-48B
 W 33 1/16 x 9 1/16
 F 11 1/2 x 7/8

SHOP NOTE:
 WORK SHT. NO. 105-48C WITH
 SHT. NO. 105-48A, 105-48B & 105-48D

**NO PAINT
 THIS DRAWING**

SHOP NOTES

- ALL RUNNING DIMENSIONS ARE TAKEN FROM THE \odot LINE.
- ALL GAS RE-ENTRANT CUTS WILL HAVE A RADIUS OF $\frac{1}{2}$ " UNLESS NOTED
- ALL SHOP BOLTS SHALL BE SNUG TIGHT UNLESS NOTED

MATERIAL: ASTM A572-50 UNLESS NOTED
 WELD: E70XX-LH ELECTRODES
 OPEN HOLES: $1\frac{1}{16}$ UNLESS NOTED

PAINT: PREP:
 PRIME:
 FINISH:

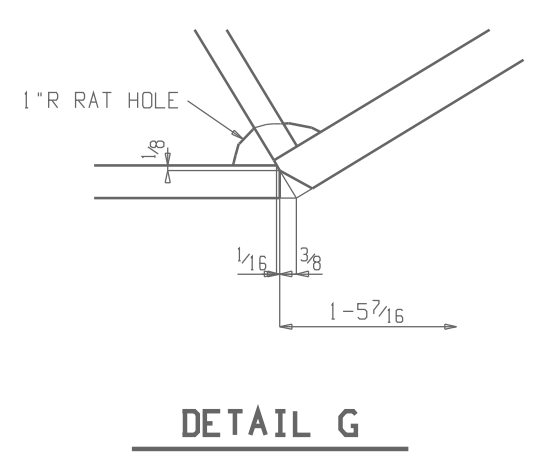
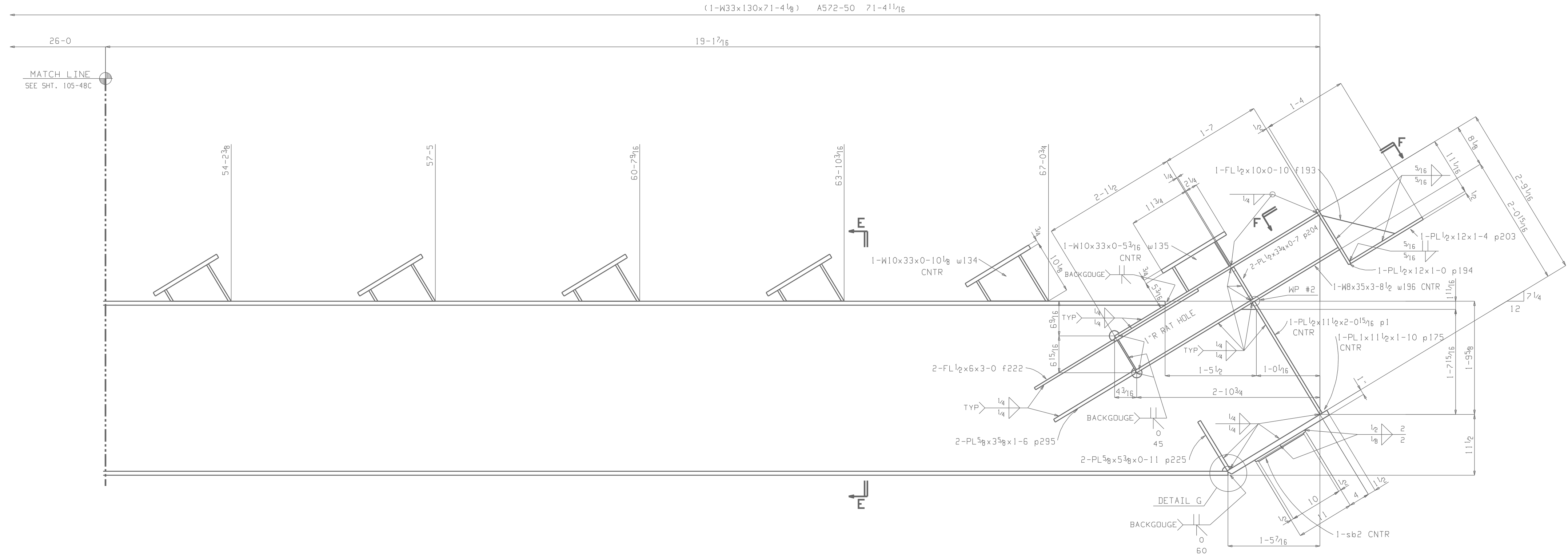
BOLTS: A325, BLACK, HEX HEAD TENSION CONTROL (U.N.O.)

DWG. DESCRIPTION: RAKER | REF. ERECTION DWG:

DRAWINGS ARE SUBMITTED FOR APPROVAL IN ACCORDANCE WITH
 AISC MANUAL NINTH EDITION - PAGE 5-229 PARAGRAPH 4.2
 AND PAGE 5-250 SECTION 4.

REVISION & DISTRIBUTION BOX						
REV.	DATE	DESCRIPTION	BY	TO APP'L	TO SHOP	TO FIELD
△						
△						
△						

CUSTOMER:				DWG. NO.
JOB TITLE:				105-48C
LOCATION:				JOB. NO.
DRAWN BY:	DATE:	CHK'D BY:	DATE:	



SHOP NOTE:
 WORK SHT. NO. 105-48D WITH
 SHT. NO. 105-48A, 105-48B & 105-48C

**NO PAINT
 THIS DRAWING**

SHOP NOTES	
1) ALL RUNNING DIMENSIONS ARE TAKEN FROM THE \odot LINE.	
2) ALL GAS RE-ENTRANT CUTS WILL HAVE A RADIUS OF $\frac{1}{2}$ " UNLESS NOTED	
3) ALL SHOP BOLTS SHALL BE SNUG TIGHT UNLESS NOTED	
MATERIAL	ASTM A572-50 UNLESS NOTED
WELD	E70XX-LH ELECTRODES
OPEN HOLES	$\frac{15}{16}$ UNLESS NOTED
PAINT: PREP:	
PRIME:	
FINISH:	
BOLTS:	A325, BLACK, HEX HEAD TENSION CONTROL (U.N.O.)
DWG. DESCRIPTION: RAKER	REF. ERECTION DWG:

DRAWINGS ARE SUBMITTED FOR APPROVAL IN ACCORDANCE WITH
 AISC MANUAL NINTH EDITION - PAGE 5-229 PARAGRAPH 4.2
 AND PAGE 5-250 SECTION 4.

REVISION & DISTRIBUTION BOX						
REV.	DATE	DESCRIPTION	BY	TO APP'L	TO SHOP	TO FIELD
△						
△						
△						

CUSTOMER:				DWG. NO.
JOB TITLE:				105-48D
LOCATION:				JOB. NO.
DRAWN BY:	DATE:	CHK'D BY:	DATE:	